



APRIL 2022

## Paparoa Community All-Weather Track

Last year Paparoa Connections came up with the idea of an all-weather concrete track around the main field of the showgrounds. We canvassed local views and got lots of positive feedback about the idea as there are very limited places for people to walk, scooter and ride their bikes in safety in our area.

The Sports and Recreation Association took the lead and came up with the plan, which in conjunction with the NKAAs we applied for and received funding from Paparoa County Depot Trust and Foundation North to build the track.

With local volunteer labour, and free digger and tractor use to build the track we were within budget.

Even with the track half-finished locals started using it to walk their dogs, ride their scooters, walking to recover from injury or illness, or just taking a nice walk or run in the fresh air away from traffic. This was encouraging for the volunteers who could see the value of it for the community.

With a delay over winter the track has now been complete, and would not have been the success it is without the generosity of many people with their time and enthusiasm. Added up it was estimated to be about 400 hours of voluntary labour! We offer a very big thanks to the track builders- led by Ken Chambers and assisted by Pete Hames, Les Shultz, Stephen Findlay, Merv Foote, Iain Davies and others.



Thanks also to digger drivers Ross Battensby and Frank Manners, and Hubands for free use of their digger. Atlas quarries were very helpful with their timely delivery of the base course metal and 13 truckloads of concrete.



On April 9 the Sports and Recreation committee will be holding our annual fun run walk and we will officially open the track. The 600 metre track at the Paparoa showgrounds is permanently open to all, so come on down and try it out.

Libby, PSRA



## Paparoa Sports and Recreation Assoc and NKAAs

Opening of exercise track at Paparoa Showgrounds and

## Fun Walk and Run

SATURDAY 9 APRIL 2022  
 Registrations from 2.30pm at Paparoa Sports Pavilion  
 4km or 5km options



Free Entry  
 Free Play Trailer Activities

Free BBQ to follow



## Let's celebrate Paparoa!

Event Enquiries:  
 Libby Jones 021 208 0093  
 hames.jones@xtra.co.nz

### INSIDE

- School News ..... 2
- Libby Jones NDHB..... 3
- Council Mark ..... 4
- I've Been Thinking ..... 7
- Letters From the Old PO ..... 8
- Rotary ..... 13
- Billie's Book Corner ..... 16
- Gardening..... 17
- Community Directory ..... 19
- What's On..... 19
- Tides ..... 19

## Paparooa Press PP

PUBLISHED MONTHLY BY  
Progressive Paparooa Inc. (PPI),  
for Paparooa, Pahi, Matakoho,  
Whakapirau and Tinopai.

CIRCULATION 1,050

CONTACT US -

- press@paparooa.org.nz
- ph Vicky 021 248 4259
- PPI, PO Box 107, Paparooa 0543
- www.paparooa.org.nz

ADVERTISING

Rate Card available by email

Booking & Copy deadline:

15<sup>th</sup> of month

Publication date 1<sup>st</sup> Wed of month



## Paparooa School News

The school year started off fabulously for us all. We welcomed Mrs Monique Myburgh as our new teacher in the Years 4-6 class, and Mr Tom Clarkson has been working alongside her in his final practicum before graduating as a teacher.

Once again, the pool has been well used, with each class swimming daily, and we enjoyed our water confidence and safety sessions with Kirsty Hamlin from Swim for Life. We held our swimming sports on 11th March – it was a great event, and everyone joined in by dressing up in house colours.

In early February, we were

fortunate to have Caleb from Football in Schools come and show us some football/soccer skills, and introduce us to some fun games to play.

The bike track is being well used, and thanks to a Sport Northland grant, we received 15 new bikes, and helmets, from Bikes Mangawhai on 25th February. Our adventurous tamariki are also enjoying climbing trees, and stilt walking during break times.

On 8th March, as part of Seaweek, and our overall 2022 theme of Kaitiakitanga, we had a great school trip to Pahi. It was interesting to find many small creatures, and plants, in their natural habitat. Before we left, we collected rubbish that had been left behind by others.

Julie Harper



## Diggers R Us Ltd

Nelson Stanley-Hunt  
Driving a Caterpillar 305.5  
6 Tonne Digger  
No job is too small



**021 423 506**

32 Franklin Road  
www.diggersrus.co.nz








### Progressing Paparooa Wastewater Solutions – Working Together

*You are invited to an open community workshop hosted jointly by Progressive Paparooa (Wastewater Steering Group) and Kaipara District Council.*

**When: 1.00pm - 2.30pm on Saturday 9th April 2022**

**Where: Paparooa Showground Pavilion**

**The Aim**

To understand and explore potential options for tackling the Paparooa township wastewater issues.

The session will be split in to two parts:

**Part 1 – Information (45 mins)**

- Outlining the issue and why we need to act now.
- Understanding the constraints that we are faced with in Paparooa.

**Part 2 – Workshop (45 mins)**

- Brainstorm ideas for potential wastewater systems and requirements (size and scope/ design)

After that, Council will prepare a prioritised list outlining the pros and cons that they share for the community to further consider.

Please RSVP to [info@paparooa.org.nz](mailto:info@paparooa.org.nz) by Monday 4 April or if you have any questions.

## A reminder to our contributors!

We need all advertising material by the 15th of the previous month and all editorial copy by the 20th. We cannot guarantee the publication of any material received after these dates.

While we always welcome editorial content we reserve the right to decline or hold over any articles outside our regular columns.

Opinions expressed in Paparooa Press are the author's own and not necessarily those of the editorial team or PPI.



### Member-Northland District Health Board Libby Jones – Health Services

There has been a lot of talk about a new hospital for Whangarei which everyone agrees is well overdue. A sum of money has been ringfenced by the government which is a significant step towards that goal.

However, a hospital for inpatient and outpatient services is only part of what is needed to deliver the full range of health services to Whangarei and our surrounding communities.

Community mental health services are currently delivered from four sites around Whangarei, and some are in also in poor-quality spaces. The goal for these has been for them to be housed together to better integrate the different services in a central hub and this plan is coming into fruition.

Manaia House in Rathbone Street is being redeveloped to be that central hub for Whangarei community mental health and addictions services. This is occurring with joint NDHB and Ministry of Health funding.

The name for the building was gifted by Kaumatua in Whangarei many years ago. Manaia is the maunga (mountain) of the tribes of Whangarei and has a significant history within Ngapuhi. Mental wellbeing is affected by many things including connection and belonging so there is hope that for those clients who are on their cultural identity

journey it will help them to feel connected to such a significant maunga, either through their whakapapa or by living in Whangarei. It is hoped that Manaia House will open in the middle of 2023.

The Community Mental Health and Addiction Services teams that will be located at Manaia House are:

- Triage Assessment
- CATT (Crisis Assessment and Treatment Team)
- Medication Run
- Regional Forensic Liaison
- Whangarei Community General Adult
- Te Roopu Whitiara (Adult Kaupapa Maori Service)
- Alcohol and Drug
- Whangarei Psychiatry for Older People
- Early Intervention Psychosis
- Te Roopu Kimiora (Child and Adolescent Mental Health Service)
- Youth Forensic Team
- He Tupua Waiora (Pregnancy and Parenting)
- Manaaki Kakano (Maternal and Infant Mental Health)

Community mental health services for our area are also provided from Dargaville

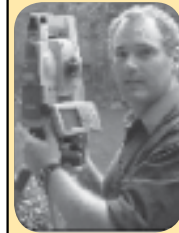
Hospital who work alongside some of the more specialist teams in Whangarei.

If you need any of these services contact Whangarei on 09 430 4100 or Dargaville on 09 439 3330.

Take care, Libby.

Libby Jones  
hames.jones@xtra.co.nz  
021 208 0093

### Birt & Currie Surveyors Ltd



Local Phone  
09 280-9591

Timely,  
friendly &  
personal  
service

info@landsurveyors.co.nz  
www.landsurveyors.co.nz  
PO Box 120 Paparoa 0543

## BRYCE

### Master Locksmith

THE LOCKSMITH LTD

Bryce Frewin  
Paparoa  
Ph: 021 850 983



bryce@brycethelocksmith.co.nz  
www.brycethelocksmith.co.nz

### Working Together On Wastewater

Last year the community was brought up to speed and consulted on the wastewater issues facing Paparoa. The Progressive Paparoa Wastewater Action Group was fortunate to receive funding from Foundation North to undertake this program. Many of you will remember Laurel Belworthy speaking to you or asking for your online feedback.

Laurel's report was presented to Kaipara Council in December and is now resulting in the joint workshop being held on 9 April at the Paparoa Sports Pavilion. This workshop is critical in advancing progress to a solution. As over 70% of the responses said that people were concerned about the future of Paparoa without a satisfactory solution and a similar number wanted a combined Community and Council approach, this workshop will enable the next steps.

Please set aside some time to attend on Saturday 9 April at 1pm, Paparoa Sports Pavilion. Further details are on the poster opposite on page 2.

Also please RSVP to info@paparoa.org.nz or if you have any questions.

PP1



## PAPAROA FARMERS MARKET

**EVERY SATURDAY**  
**THE VILLAGE GREEN 9-12**

Market Manager  
Graham 09 4317 209 or 0274 75 4490  
grnt@xtra.co.nz

## Paparooa Print Shop

At Skelton's  
Paparooa Drapery  
431 7306



See Robyn for  
all your printing needs

## Al's Upholstery

Alan Hilton



Automotive  
Furniture  
Covers  
Seats

over 30yrs experience

021 0709101

100 Petley Rd, Paparooa



## Council Mark says - Tell Me What You Think

I've been thinking about ways of making the dollars we spend on footpaths go further. You may not realise that the annual council operational budget allows for \$118,000 to be spent on repairing and maintaining the existing footpath network, and there's \$200K for capital works (that's new footpaths).

To say the least, these amounts are underwhelming for a district of our size with its numerous settlements stretching from coast to coast. We could spend more, and the choices are to increase debt, increase rates or reduce an existing allocation from somewhere else to do this. None of these options is at all palatable, so I have been thinking about a fourth option in relation to repairs to the existing network to make those dollars go further. This is by calling on volunteer armies from within each community to provide the labour with Council providing the materials (although as a community-led initiative the ready-mixed concrete companies may well charge a special price not available to council's contractors).

There would be issues to resolve – traffic management,

health and safety and quality assurance being the obvious ones. There will be challenges with determining allocation – a contestable fund perhaps? Also, I don't think it would be very easily managed in the likes of Mangawhai or Dargaville either because of their size. Tell me what you think. Is it worth me pursuing this?

I refer now back to my March column relating to carbon

farming. I need to correct something I wrote, as a friend who I will call "Kenny" (not his real name) pointed out to me that any trees which mature, die and fall down will ultimately become carbon sequestered within the soil rather than carbon in the air. I defer to his greater knowledge on this.

Mark Vincent  
Otamatea Ward Councillor  
021 0829 8037

## One Lane Bridges

We have a lot. And it seems that quite a few good folk around here haven't figured out how they work. I'll help you out.

This sign means  
YOU GIVE WAY



This sign means  
YOU HAVE RIGHT OF WAY



It's pretty simple really... The basic things you learn when sitting your licence - like indicating and what the lines down the middle of the road mean. Not that complicated.

*What I found particularly amusing when searching these signs on the interwebs was the ad for IQ testing at the bottom of the page. Seemed appropriate somehow...*

PP

# Nicky Reid

021 103 6277

## Real Estate Agency

specialising in Farms, Lifestyle Blocks and Houses

MREINZ, Licensed under the REA 2008

I offer customised marketing plans tailored to suit each unique property and to reach buyers in any target market.

Free drone photography

Free market appraisals

Call me now for a confidential chat.

Connections  Real Estate

## Press Office rumblings

We had a bit of response from our call for new editorial contributors to the Paparooa Press.

So watch out in the next month or so for some great new regular columns.

We welcome all contributions and one-off items of interest, but do reserve the right to not publish anything we deem inappropriate.

If you feel you have something to offer email Margie at: [press@paparooa.org.nz](mailto:press@paparooa.org.nz)

## Update from PPI Community Activator

### The Village Green Enhancement Project

After community engagement some years ago, a visual concept for enhancing the existing playground and park area was created by a playground design specialist, who had been responsible for other playgrounds in NZ.

The creative concept includes additions and extensions for the current playground, more seating, creative pathways and extended plantings and gardens, to beautify the area and improve the facilities.

Technical plans have now been drawn up which provide specific instructions and measurements to allow the designs to be constructed.

A meeting with the council will be held shortly in Paparoa to discuss these plans, and creative elements for the area.

This is exciting as it is the first stage in bringing the creative concepts to life, and we will have some input from the council as to our next steps.

If you would like to be involved in this project as a builder, tradesperson or drainlayer please contact me on 021687226

### Waka Kotahi NZTA for Northland Speed Limit Review

Communications from Waka Kotahi on their review have been delayed, which is a benefit to us, as it gives us more time to ensure as many

locals have the opportunity to complete the community survey and have their say.

If you would like to complete the survey online you can access it directly at [www.surveymonkey.com/r/ZHP3NJG](http://www.surveymonkey.com/r/ZHP3NJG). Or you can go to the 'Progressive Paparoa' or the 'Proudly Paparoa' Facebook pages and find it there as well.

It will only take a minute or 2 to complete, and we'd like to have your views.

Val

## Painter & Decorator

Tradesman's quality work guaranteed



- Interior
- Exterior
- Spray finishes
- Roofs
- Waterblasting

For your free quote call Mike 021 529 025

## KDC Community Grants

Grant applications open 01 April and close 02 May at 4:30pm.

The Kaipara District Council Community Grant is:

- Intended to make a contribution to an organisation to support Council's Community Outcomes;
- Intended to support events, services or activities that are of benefit to the community, and can demonstrate those benefits;
- For operational costs or capital projects.

The criteria and application form can be found at:

[www.kaipara.govt.nz/residents/community-funding/community-grant](http://www.kaipara.govt.nz/residents/community-funding/community-grant)



Please email completed applications to: [grants@kaipara.govt.nz](mailto:grants@kaipara.govt.nz) or post them to: Private Bag 1001, Dargaville 0340.

## Faith

*Faith is a butterfly  
with bright and beautiful wings.  
It knows it was once a worm,  
that turned inside out  
and lost its head.  
The wonder of its transformation  
astounds it.  
It flies through storms  
and over oceans  
to dwell in beautiful places  
of sunshine, soft breezes  
and perfumed gardens.*

B. Liever





### Rhoda Morrison

*Consistent Award Winning Salesperson*

Achieving top results  
for Clients!

**09-431 6912**  
**0274 800 691**

[rhoda@fnkaipara.co.nz](mailto:rhoda@fnkaipara.co.nz)  
[www.roperandjones.co.nz](http://www.roperandjones.co.nz)

**firstnational** Roper & Jones  
REAL ESTATE

Dargaville Realty Ltd, Licensed REAA 2008

## KAIPARA

# LANDSCAPE SUPPLIES

**2 Blakey Road Maungaturoto**

## OPEN 7 DAYS

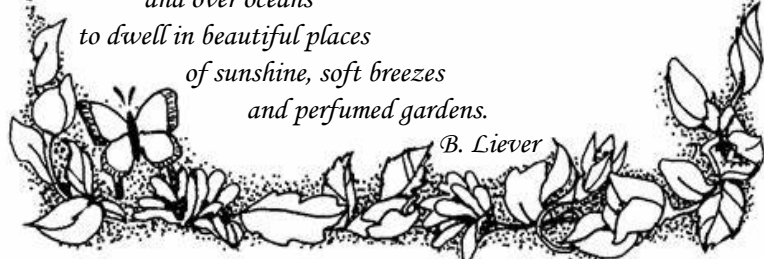






**Landscape and Garden supplies,  
garden ornaments, firewood,  
digger hire, pots**

**0800 769 843**



*Starbright Wellness**Reflexology**Massage or Reiki**Weight Loss Coach**Marriage celebrant**Vicky Hilton*

021 2484259

2004 Papara Valley Rd, Paparooa

**PLUMBER**

Kaiwaka to Ruawai

- 30 years' experience
- All plumbing services including new housing and maintenance



**ANDREW KENNY**  
ph 027 642 8320

**Haymaking At Ararua**

One of the exciting things in our childhood was when we were allowed to drive the tractors in the hay paddock while the men loaded the bales of hay onto trailers. We could even drive a neighbour's tractor instead of our father's which was a challenge. School holidays meant driving tractors to pick up hay. As we progressed to secondary school we were told, "No, you young fellers can load the trailers and we will sit in the shade of the shed and unload them.

One of the men will drive the tractors." So suddenly we were old enough to lift the hay onto the trailer and stack it and send the loaded trailers off into the hay barns. On one particular day when it was very hot weather and the hay was drying more quickly than usual, the contractor was getting through two customers a day instead of one. We, the lackeys, were the ones who had to pick up the extra hay. We had picked up the hay in one man's paddock and moved on to a second farm. We suggested that we young guys went into the shed to unload and the men could take a turn to load the trailers out in the hot sun. They wouldn't have a bar of it. So we were out in the paddock again loading hay and had sent our first trailers off to the shed when the men came out, "You guys can unload and we'll take over the loading." We were immediately suspicious

about this, turned down the offer and stayed where we were, but wondered what was going on. Before very long the last man unloading came out into the paddock, jumped off his tractor, and dropped his trousers looking for fleas. The reason they didn't want to be in that shed was that some pigs had wintered in the hay barn and by summer it was full of flea eggs. The movement of the men's feet had created a swarm of newly hatched fleas. We held our ground, we weren't going into that shed and we continued loading in the heat of the day.

We heard the sequel to our little stand-off. The men went back into the shed and once they got new hay on the ground they weren't too badly off. The fleas stayed down at ground level while the men

stood on the higher bales. But - an inspector from the council came out to the hay barn. He was wearing his boater hat and tie, short-sleeved shirt, knee length white socks and shoes. He started lecturing the men



and he got a very good hearing from them, they respectfully listened with deadpan faces and watched as a swarm of black fleas slowly climbed the white socks. When the fleas hit bare skin things changed pretty quickly, the men had a good laugh and 65 years later we are still laughing over that incident.

K.B.

**YOUR TYRE SPECIALIST**

Providing 60 years of service  
in the heart of Kaipara.

- Tyres
- Brakes
- Wheel Balancing
- WOF
- Suspension
- Servicing
- Alignment
- Batteries

**Garnetts Tyre Service**

📍 2 Gorge Rd, Maungaturoto

☎ 09 431 8255

**BRIDGESTONE** TYRE CENTRE

**COMMUNITY CHAMPION****Ken Chambers**

Our Community Champion for this month is recognised for all his community achievements - in fact, he's on so many committees he has no free nights in the week!



Wife Delwyn has been trying to get him to retire for some years but there's always another project.

Ken is involved with the Lions of Paparooa, is on the Sports and Recreation committee, the Ararua Church and the Memorial Hall committees, and has been a past member of Progressive Paparooa Inc. He is also involved with Youth With a Mission (YWAM).

The son of a pastor, his early years were spent moving around and the family settled in Maungaturoto when he was aged 6- 11. The area made a lasting impression on Ken and he eventually moved back to Whakapirau.

Because of his great building skills Ken has been roped into many projects in our community. The Paparooa Showgrounds new concrete walkway is one of the latest projects he has been involved with and was very disheartened to find that several younger members of the community had been walking and riding bikes through the wet concrete. The repairs to this took hours...

Thank  
you!

## I've been thinking ... That Not All Change Is Progress, And Progress Is Not Always Totally Advantageous

This philosophising began with a very mundane situation. I needed to telephone someone. In the bad old days before mobile phones, that was easy. Just look up the number in the phone book. In the very bad very old days of local telephone exchanges you could even ask the operator to put you through to Joe Blogs. As a bonus you might even be told to phone in half an hour as Joe had just gone out and would be a while. Nowadays you might be lucky to find a listed number in the book, if you have a book.

Plan B... Google it or use the white pages web site. You might be lucky. But the

chances are very great that the someone you want to contact does not have a landline or an internet presence .

So.... plan C it is. This means racking your brains to think of someone you know, and whose phone number you know, who knows the someone you want to contact and will have the number if you phone and ask politely.

Sounds familiar doesn't it! I'm prepared to bet we've all gone through this process and either made a call asking for a number or received a call asking for help.

Mobile phones are a great convenience, but they do have that downside. Of course, once you have a number saved, all is good.

Perhaps there is some tech savvy person in the district who could compile a local directory. It would be soooo useful. And I would start to regard mobile phones as unalloyed progress.

RS

### REX BROWNE CONTRACTING

- Limestone & Metal Cartage
- Truck & Digger Hire
- Farm Roads
- Earthwork & Dams
- House Sites & driveways
- Wrapped Silage & Hay
- Cultivation
- Fencing & Mulching



**Maize Silage planting & harvesting**

☎ 09 431 7556  
 📠 021 720 590

## Plastic #5 Recycling!

**From Monday 4th April, Kaipara Refuse will be taking #5 plastic for recycling!**

This means your yoghurt pottles, icecream containers, etc. No more stockpiling/chucking in the bin/giving them to your Auckland mates to recycle!

### NOT SURE WHAT #5 MEANS?

☐ Check on the bottom of your plastic containers- they will have a number inside a recycling symbol. All clear number 1 plastics, and number 2 and 5's can now be popped into your yellow recycling bag for collection.

☐ **REMEMBER** - all recycling must be **CLEAN** and **DRY** so the people who sort it don't have to deal with mess and smell- and they won't have to send your containers to landfill.



Of course, in the hierarchy of waste, choosing other options to avoid the plastic container in the first place is always a better option. Refilling containers, or making homemade, waste free food and drinks, are always going to use less resources- and be cheaper.

If you have a **REUSE** purpose for the containers, that's great too! But you can only use so many... So if you find yourself with unused #5 plastic wash and dry it, pop it in with your other recycling, and keep it in the loop! Once it's in a landfill it's gone forever.

For more information on what can be recycled currently in Kaipara go to [sustainablekaipara.org](http://sustainablekaipara.org) or [kaipararefuse.co.nz](http://kaipararefuse.co.nz).

(Hopefully by the time you read this the websites will have been updated!)

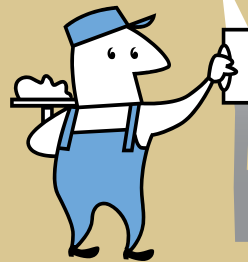


Kaipara Refuse is now taking #5 plastic for recycling!

PP

## TINOPAI PLASTERERS

WE GUARANTEE THE HIGHEST QUALITY FINISH



35 Years experience in...

- GIB Stopping
- Fibrous Plastering

for FREE quote, call us now!  
Trevor 021 0300 073



### Battensby Brothers Contracting Limited

[www.battensbybrothers.co.nz](http://www.battensbybrothers.co.nz)





### Call to book us now for ...

- ◆ **Ground Cultivation**
- ◆ **Silage and Hay**
- ◆ **Fertiliser spreading**
- ◆ **Firewood (WINZ approved)**



Contact Glenn on 021 983 734

Email: [battensbybrothers@xtra.co.nz](mailto:battensbybrothers@xtra.co.nz)



LIGHTS ON  
in fog or rain



## KMU SURVEYS LTD

MAUNGATUROTO

**Ken Urquhart**

Licensed  
Cadastral  
Surveyor



**09 431 8705**  
**021 161 2344**

kenurquhart@xtra.co.nz

## Letters from The Old Post Office... Road Rules For Life

"I do" Pandora protested, looking chagrined. I follow all the rules that I can remember."

Road rules often remind me of marital vows. You know, the honour and obey bit. You accept it is possibly pertinent for safe journeys through life, the honouring part I mean. However, when you have trundled respectfully behind three cars travelling in convoy at an honourable 75 kms, two truck and trailer units, a caravan seemingly driven by some sort of rear vision impaired user, and a partridge

in a pear tree, the obey section seems to fall through the memory cells. (Just like Pandora). After all, what is an accelerator for?

As some of you know, the Maudi and I set off to visit the South Island on a motherly visit of concern. Actually, the whole family was concerned. Just for different reasons. The children listed their concerns in a group chat. They all had their little something to say. Surprisingly, the obey word was mentioned several times. Apparently, they wrote their points in the chat so that I could read them over at my leisure, digest them and obey them!

Well, Dear Reader, those of us who have allegedly adult children well know the little homilies that may be imparted to clearly their elder, but less wise, parent. I truly do not know how I have managed this long by myself. They made points like: take a rest every hour, stretch the legs ( at my age one is at risk of thrombosis, apparently) drink plenty of water, take the

journey in easy stages, do not talk to strangers, do NOT make rude gestures at other road users even if they are imbeciles, and OBEY the road rules. I smiled sweetly, in a virtual kind of fashion, while crossing my fingers and toes and singing "I'll do it my way" under my breath. Making a firm vow to speak to as many strangers as possible, the stranger the better, stretch my legs whenever and wherever I felt like it, and naturally drinking plenty. Although Not when driving (grapes use water don't they)?

According to Google it is 4 hours and 21 minutes from Picton to Christchurch, NOT including road works. Of which there are far too many! Suffice to say I have asked the house-sitter to check the post box for any billet doux from Waka Kotahi Transport.

Ka kite  
Deb

\*from Lisa Kleypas, Cold-Hearted Rake (The Ravenels #1)



### 4 Tonne -DIGGER – BOBCAT – TIP TRUCK

Property Maintenance – Driveways – Building Sites  
Stump & Tree Removal – Hole Boring – Chain Trencher  
Calf Shed and Stockyard Cleaning

Phone Matt: 021 199 6677

Email: mprabrownecontractors@gmail.com

## Kaipara IT

### Business Support including:

- Proactive maintenance and support
- Hardware supply & maintenance
- WIFI design, setup and fine tuning
- Printer supply, setup and support
- Backup and Disaster Recovery planning
- Web Hosting
- Office 365 / Azure setup and migration
- Antivirus/firewall TDR EDR

### Home Support including:

- Computer upgrades and repair
- New computer supply and data migration
- Setup cloud and local backup
- Smart TV setup
- WIFI design and configuration
- Printer Supply and setup
- Antivirus and security advice
- Friendly, straight forward approach.

## Kaipara IT- Making it Easy

Wayne

email support@KaiparaIT.co.nz

Ph 0800 2network (0800 263896)  
or 0226485713 www.kaiparait.co.nz



## OCS April News

It's April already and with March came autumn days. A beautiful time of year that is usually not too hot, not too

cold; with hopefully just the right amount of rain. Is that a tall order? The next wish is to see the end of illness, restrictions, cancellations, shops closing etc, all due to Covid 19. Who knew the world would become a slave to a virus?

We applaud those in the health sector who have had such a huge job taking care of the sick, protecting us as much as possible by way of safety equipment, giving us steps to take for our own and others' good health, and advice when we are feeling unwell.

Our hope is that you, our community, and those close to you have managed to keep well.

Our services are going well, with everyone keeping a fairly busy schedule of appointments. There has, however, been a slowing down since the virus became more prevalent in our area, which is to be expected- and wise too. It's safer to stay home if possible.

We wish you all the best in keeping safe and well, look after yourself and those around you.

Kindest regards from all at OCS  
Ph 09 431 9080 or email reception@otamateacs.org.nz

The Paparooa Press is available  
online at paparooa.org.nz



## Book Review

### Syria's Secret Library - Reading and Redemption in a Town Under Siege

Written by Mike Thomson - writer and reporter for BBC News.

The Paparoa Library copy of this book has its own story. It was in the first lot of books I ordered as the new manager at the library in June 2018. It had no sooner gone onto the shelf when it disappeared- not checked out and completely untraceable for six months. Then one Thursday on the weekly book exchange between the five Kaipara libraries, there it was. Returned unscathed and into my hot little hands. As the manager of the library my reading ability has been next to nothing- every book club night we had there I was sheepishly telling them what I had been watching on netflix and not a book review to be had. Reading was off my agenda totally, for what reason I do not know.



Then, a couple of weeks ago, I picked up another book I liked the cover of and read it in an afternoon - and I haven't stopped reading since. I was tidying the shelves in the Non Fiction area and my eye caught my mysterious book and I have this afternoon just put it down having been completely absorbed in a story which is just truly amazing.

It is a remarkable story of a small, makeshift library in the town of Daraya (I visited back in my days of safe travelling) and of a 14 year old boy who ran the library through a four year siege which saw Daraya completely destroyed along with its people.

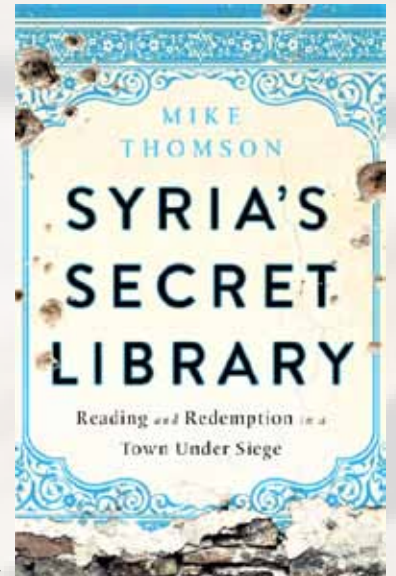
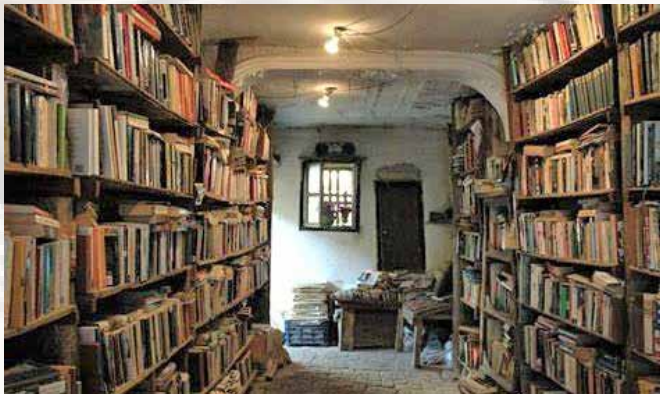
"It is a unique tribute to the power of books and the unquenchable human spirit" said Michael Palin and he has completely described it perfectly.

A good read - indeed and I didn't put the book down until I had read it cover to cover.

And when you think about it - the same thing could well be happening in another part of the world at this very moment...

Jas Futter

Paparoa Community Library Manager



## Paparoa Community Library



The change of hours to shorter time slots has been very successful and will continue throughout April. It has allowed the library to run with the number of volunteers on board without any hiccoughs or complaints.

In May the hours will remain the same but with two extra days added. We are just working on this and by mid May all customers at the library will receive a flyer with the new days and hours. Notices will be up in the village at the store and Skeltons, on Facebook and in Paparoa Press.

Tuesday 11am - 1pm

Thursday 2pm - 4pm

Saturday 10am - 12pm

Outside of these hours book returns can be dropped into the box to the right just inside the main door at Skeltons Drapery.

If you would like to become a volunteer at the library we offer full training via a buddy system and time slots will be 2 hours. We will be offering the public 5 out of 7 days of the week.

Jas Futter  
Paparoa Community Library Manager  
022 678 1474



# LATTO

## BUILDERS


021 7727 66

House Construction, Alterations  
Renovations or General Repairs




## COLOUR & CUTZ

- Ladies & Mens Cuts
- Colours & Highlights
- Weddings
- Gift Vouchers



All colours & products used  
at the salon are organic



Salon 431 7255 Gaylene 021 115 8056

OPEN TUESDAYS TO SATURDAYS  
1994 Paparoa Valley Road

## Books And Bookclubs

The Pahi Bookworms have a monthly theme to their meetings and last month we shared our thoughts on keeping a sense of humour in difficult times.

This ensured an afternoon of levity as we recalled hilarious occasions, comedy programmes (Fawlty Towers, Nine out of Ten Cats) and an assortment of jokes. Laughter being the best medicine we returned to our homes suitably cured of any and all negative thoughts. We also share any large words we have come across in our reading that have caused us to consult our dictionaries. You might need to look up "lethologica."

"The Single Ladies of the Jacaranda Retirement Village", by Joanna Neil brought us all a good laugh as we could see ourselves and each other amongst the characters, and even younger readers can gain insight into their older, crankier relatives. The essence of all good stories, it has a series of things that go wrong that are ultimately righted while keeping us intrigued along the way. Some poignant insights into coping with aging are subtly given within its

pages. A good read therefore across all ages.

The "Agatha Raisin" series by M.C. Beaton has been going since 1992 with the latest as recently as 2020. The main character is possibly nearing middle-age, in early retirement, still seeking love and romance, while inadvertently solving crimes and sorting out dastardly deeds. Set in the Cotswolds, these amusing who-dunnits are also enjoyed by any age. Light reading, not too long, good holiday reads.

Music appreciation by the E.R.M.A Bookclub was also rather hysterical this month as we were introduced to camel sounds in recordings in modern music by our youngest member. (Live Like A Warrior, Matisyahu). This reminded the older among us of the Singing Dogs (by Don Charles, 60s era) recordings of a variety of dog barks, the different pitches making the different notes of well known songs and tunes.

Spike Milligan's Ying-Tong Song also got a mention and Tiny Tim's "Tiptoe Through the Tulips" in the category of crazy recordings.

Do you know, without asking Mr Google, who sang

"She's Like the Wind," from the movie Dirty Dancing, "The Streets of Philadelphia," from the movie Philadelphia, and "Storybook Love," from the movie The Princess Bride? The answers may surprise you.

AB



**Paparooa Motor Camp**  
CABINS | TENTS | CARAVANS | MOTORHOMES  
17 Pahi Rd, RD1, Paparooa, Northland. Ph: 09 431 6515 Email: paparoomotorcamp@extra.co.nz

Set in a quiet rural area, within easy walking distance to picturesque village with shopping facilities, a general store & post office, service station, restaurant, friendly country pub, takeaways, café, gallery, bush walks. Only 6kms to the Matakoho Museum.

[www.paparoomotorcamp.co.nz](http://www.paparoomotorcamp.co.nz)



### Under New Management

Self Contained Cottages

Cabins with TV

Tent and Campervan sites

contact

09 431 6515

Cnr SH12 and Pahi Rd



### Hard to keep a good gallery down...

Eight years ago an idea was formed by a group of local artists.

A meeting was called and about 40 interested people decided to open an art and craft gallery in Paparooa. The search for premises began and it wasn't easy finding somewhere suitable. Two rooms and the hallway were offered in the Library complex (now the Medical Centre). A start-up grant was given by PPI and after a lot of hard work by members 'White Rock Gallery Paparooa' was opened in February 2015.

White Rock Gallery operated as a collective very successfully for three years and then in 2018 the premises were put up for sale and White Rock were homeless. After being closed for six months, in September 2018, the Matakoho Kauri Museum kindly offered a fabulous space. Enthusiasm was still strong among the members and the Gallery became 'White Rock Gallery Matakoho.'

The Gallery had a wonderful busy few years at Matakoho, then covid hit. We managed to keep going through all that, but the lease expired and we were on the move again.

Lots of options were explored including getting a converted container and operating out of that. Then two shops in Ruawai became available for lease. With a lot of help and encouragement from friends and supporters, in June 2021 they became 'White Rock Gallery Ruawai'.

Members have come and gone in that time but a strong group of original and newer members are determined that White Rock Gallery will survive. Its been difficult, but it proves that there is a need for a collective of local artists and craftspeople to have an outlet to showcase their work.

Our AGM will be held on 5th April 2022 at 7 pm Matakoho House - we'd love to see you there.

White Rock Gallery Ruawai is open Monday to Saturday 10.00 to 4.00 (closed Sundays)

New members welcome - contact Lorraine [whiterockgallerynz@gmail.com](mailto:whiterockgallerynz@gmail.com)

White Rock Gallery Committee

20

**REMEMBER!**

**Either way it's 20k**

when you pass a school bus that's picking up or dropping off children.

20

# I Wonder?

Shall we plant millions of pines- like 2 million hectares of hard to farm hill country to balance out some of our carbon emissions? Or is this doing more harm in the long run than good?

Pines are now one of our biggest pest plants. I saw near Arthur's Pass large tracts of sprayed dying wilding pines. Imagine the amount of herbicide used to deal with this problem? What damage is that causing to our rivers and wild life?



Will the owners (possibly from overseas), of the carbon credit blocks in other regions like the East Cape, just walk away once they have pocketed their carbon credits?

Ex pine forest blocks are notoriously hard to change into other land usage- covered with gorse, pampas and other previously unknown in the area weeds.

Little employment is gained after pines are planted for at least 20 years.

Then, when pines age and die, the sequestered carbon is released.

Planting in native trees is expensive, time consuming and their ability to store

carbon is slower, but could this not be by far the best long term option for our country? The habitat for our birds and native wild life would be improved permanently.

They look much more attractive and their diversity would



make them less liable to be prone to disease.

Why, when they transition blocks from hill country farm land to trees (of any sort), don't they use the formed tracks into off road trails for people to ride or walk for recreation?

This could lead to employment opportunities like has occurred on the Timber Trail at Bennydale.

At a time when anxiety is high, walking in nature is a huge release.

Stella

**PETE THE BUILDER**  
your local friendly builder

---

**Peter Clark**  
Ph: 0276 713 416  
petethebuilderltd@gmail.com  
582 Pahi Road, R D 1, Paparoa, 0571  
A/hrs 09 431 6005

**White Rock Gallery  
AGM**

**Tuesday 5th April  
7pm**

**WhiteRock Gallery,  
Church st  
Matakohe  
ALL WELCOME**

**Susan Taylor**

## Thinking of Selling?

Curious to know what your property's worth?



**Call Us for your  
FREE APPRAISAL**

**Keep Smiling & Stay Safe**



**Leanne Walker**  
Licensee Salesperson  
021 431 619

leanne.walker@raywhite.com

*Locals Servicing Locals*

The Locals Warkworth Ltd Licensed (REAA 2008)

**Keith Shadbolt**  
Licensee Salesperson  
021 402 122

keith.shadbolt@raywhite.com

## W.J.BARKER SCAFFOLDING

A local scaffolding service for any renovation, painting, new build, roofing & access requirements.

Call anytime for an estimate.

0204 186 9864  
09 280 9520

www.wjbarker-scaffolding.co.nz  
info@wjbarker-scaffolding.co.nz

## Keith the TV Guy Freeview digital TV



20 TV and 9 Radio/Music channels are currently being transmitted.

Satellite dishes, decoders, cable etc., supplied and installed.

09 431 7143  
or 021 239 4251

## “We Don’t Know How Lucky We Are?”

In these times everything has a tendency to feel full of doom and gloom but maybe we need to find some positives? Were things really so much better back in the 70/80s?

Health - Life expectancy was 10 - 15 years shorter with treatments for cancer, heart disease and hip or knee replacements rare and expensive.

Racism, sexism and homophobia were rife. Sure- we aren't perfect yet- but we have definitely improved.

Travel in general was expensive, although many young people managed to do their OE.

Sports around here was generally confined to just a few options- rugby, netball, hockey, squash and bowls.

### Definite pluses we have in our Kaipara area include -

A caring community that has such a huge variety of volunteer activities...

Grow Paparooa - with their awesome gardens to give food to those in need as well as providing a great opportunity to work in a friendly group.

The Mountain bike track at the show grounds that gives young people a chance to test their skills- plus the newly completed concreted track around the show grounds for use for fitness or for little ones to learn to ride their trikes.

Lions Bush Walk - a fantastic walkway, only possible due to so many volunteers.

Linking Hands - providing transport for hospital and medical visits.

Otamatea Community Services- offering counselling, mentoring and other social services.

Paparooa Press - keeping us up to date with local goings on.

Many and varied groups and clubs, such as, the patchwork group, garden club, toy library, Plunket, sports clubs, marching, line dancing, tennis, badminton, table tennis, Otamatea Repertory Theatre, pony club, and many more.

So next time you're feeling like it's all a bit hard or you're a bit lost and lonely- get in touch with a local community group and find where you can get involved.

And if you need a good old nostalgic laugh, check out the wise words of Mr Fred Dagg:

[www.youtube.com/watch?v=AYVMeT2GC14](http://www.youtube.com/watch?v=AYVMeT2GC14)

SC

## THE KAURI MUSEUM

Guardians of the kauri story  
Past, present, future

Come and see one of the most  
extensive collections of kauri and  
antique furniture in New Zealand

Open 7 days, 9 - 5

Buy your Annual Pass today

5 Church Road, Matakoho ph 09 4317 417 [www.kaurimuseum.com](http://www.kaurimuseum.com)

## FARMWORK SERVICES

For all types of fencing, stockyards,  
handyman work, tree felling, tractor work etc.



Mike 09 431 6509

027 203 2694

[farmwork.services@gmail.com](mailto:farmwork.services@gmail.com)

12 tonne digger now available  
for driveways, farm tracks, hole boring etc

## Leaf Mulch

Many gardeners view the piles of dropped autumn leaves as a nuisance and spend hours cursing as they rake, sweep blow and vacuum them in an attempt to keep things "tidy".

But maybe these dead leaves should actually be looked upon as a treasure. Leaf litter mulch in gardens has numerous benefits and mulching with leaves is an inexpensive and renewable way to achieve gardening success.

Leaf mulch, also known as leaf mould, buffers soil temperatures to keep soil warmer in the winter and cooler in the summer, thereby protecting plants. It improves soil fertility as it decomposes, which reduces the need for fertilizing. Leaf mulch can aid in retaining soil moisture too, lessening irrigation needs.

It also helps suppress weeds, reducing the amount of weeding for the gardener or the need to use herbicides.

Leaf mould is made when leaves are broken down by the slow action of fungi, rather than by bacteria that decompose other compost bin ingredients.

Pile leaves up separately in a bespoke leaf mould bin or cage, keep them moist, and you'll have the perfect material to use for mulching and potting in years to come.

If you don't have a bin or cage you can put them in black bags, make sure they're wet, punch a few holes in the bag and leave them for a year.

Large, tough leaves may need chipping or a run over with the mower first.

Nature provides us with all the valuable resources we need and we should be copying, not fighting her.

PP



# The Future Is Regenerative

Local farmers Adam, an ex-Paparoa School pupil, and Laura Cullen have discovered that there are rewards to be had from a more regenerative approach on their Ararua farm.

They have introduced multi-species cover crops and use direct drilling where possible.

A multi-species mix (which can contain at least 20 species), was added to and blended by Adam in a new concrete mixer.

They can contain ryegrass; cereals like barley, buckwheat, hairy vetch and peas; brassicas such as kale, pasja, mustard and radish; legumes like clovers and lupins; and other species, such as phacelia, sunflower, flaxseed and chicory.

Adam views pasture quite differently now, and sees the



benefits in carbon capture, diverse micro-organisms and rhizobia, more worm activity, improved soil structure and porosity and more consistent productivity.

The Cullens are happy to share their story with other farmers.



Adam and his girls enjoying the sunflowers

They featured in the March 3rd issue of Farmers Weekly: [farmersweekly.co.nz/s/](http://farmersweekly.co.nz/s/) Search "Cullen" and the article is "Diversity for Sustainability".



## Maungaturoto and Districts Rotary

Like most organisations, Maungaturoto Rotary has found that there have been severe limitations in activities we have been able to undertake as well as a general cautiousness in attending meetings. We are hopeful that very soon there will be a "new normal" within which we can more effectively operate.

Our Driver Mentoring scheme continues to go well, even though all students need to be double vaccinated and we had another success during the month. There is quite a long "wait-time" for appointments with VTNZ so we encourage our students to book as soon as they (and their mentor) feel they have the ability to pass their restricted license. There is no doubt that the students who perform best on testing day are those who have been able to drive their family car on a regular basis in a variety of places. Just a point to note- if your son/daughter is driving a car alone on a learner's license, and has an accident, most insurance companies will not cover the cost of repair of either car. This means you could have a substantial debt to pay.

Talking of Driver Mentoring- if you have an hour or two a week that you might be able to give in mentoring (enabling clients to get from their learners to their restricted) please let me know (Eileen- 0211420357). We work with People Potential and Roadsafe North, and there is a one day training course that needs to be attended with an approved Driving instructor. At the moment, we have three Mentors but it would be good to have more on board so we can make more effective use of the car. Usually we aim to provide 12 lessons (the last two in Whangarei), the length of which varies from one to three hours. A mentor has the same student throughout at a time that suits both parties and this is a voluntary position.

While we will always meet on a Tuesday night, we have decided to make some changes to our meeting format. Most of our meetings will be in the Centennial hall but we are also aiming to have more offsite meetings as well to give the Maungaturoto members a chance to join with Mangawhai Satellite club on occasions.

The Satellite club is planning to wind up their sailing activity at the end of March, but will start again later in the year (possibly to coincide with daylight saving). From one session a week, this has now grown to two sessions each on Monday and Wednesday. I understand that there are 35 youngsters involved from the age of 8 to 13. Not only do they have a very dedicated group of tutors but the parents are very supportive as well.

While Mangawhai makes the most use of the east coast, we were able to hold a BBQ at Pahi on a recent Tuesday night. The weather was perfect and the ability to meet outside (in the shade of the Moreton Bay fig) added a pleasant dimension to fellowship.

Eileen Parsons 021 142 0357

## Cameron Philips CABINETMAKER Matakohe



- Kitchens
- Custom Furniture
- Furniture repairs & restoration
- Custom run mouldings
- Stairs & Timber Doors
- Residential & Commercial Joinery

QUALITY WORKMANSHIP

09 431 7579

[cam@cp-cabinetry.co.nz](mailto:cam@cp-cabinetry.co.nz)  
<http://cp-cabinetry.co.nz>

## LIFESTYLE AUTOS

Roger Price



Full Mechanical Services

Warrants of Fitness

Paparoa Valley Road - next door to g.a.s.

Phone 431 6620

## FENCING SPECIALISTS

CALL CHRIS HICKEY ON 027 561 1719 email: [fencingspecialists.nz@gmail.com](mailto:fencingspecialists.nz@gmail.com)



ALL ASPECTS OF FARM & LIFESTYLE BLOCK FENCING & MAINTENANCE INCLUDING:

- Post & Batten • Entrances
- Post & Rail • Retaining Walls
- Stock Yards • Riparian Lots
- Netting • Subdivision



**iain davies**  
WOOD WORKSHOP

- timber repair work
- furniture repairs
- plywood furniture
- shelving and cabinetry

021 2550521  
431 6730

**HOMEKILLS**



WAYNE & ANNETTE

**09 439 2020**

Dry Aged Beef Specialists  
Traditional Manuka wood smoked Bacon & Ham  
No Retail  
TOKA TOKA

**KAIPARA PLUMBING LTD**



**DRAINAGE  
YOUR LOCAL  
PLUMBING  
SPECIALISTS**

**ALL  
GENERAL  
PLUMBING  
AND  
MAINTENANCE**



Master  
Plumbers  
Representing Excellence

**PH GRAHAM**  
**027 244 5430**

## THE HERBALIST Tea

### Camellia sinesis



For thousands of years people have been drinking tea because it tastes good, and has stimulating properties similar to those of coffee. But it also offers us a benefit that doesn't commonly make the headlines. Drinking tea can give us precious moments of relaxation and connection, which in these stressed out times is important.

There are all kinds of tea, black, green, white, oolong and pu-erh, which come from the same plant but are processed differently. Black tea is highly oxidised, green tea is not oxidised, oolong is partially oxidised and pu-erh is fermented. Lots of flavour and choice.



Numerous studies have demonstrated tea's ability to protect the heart by lowering blood pressure and heart rate. There are also studies that show assistance with type 2 diabetes and metabolic syndrome and that drinking green tea helps with weight loss.

Vicky

## HELP!

Mangawhai's Helping Paws (Animal Rescue) desperately need volunteers.

Can you spare 2 hours one morning per week?

This is their busy period, so they literally have hundreds of cats and kittens to take care of.

The kittens are in foster homes until they're old enough to be adopted but there are still beautiful adult cats in the cattery needing care.

You will be changing food and water bowls, litter trays and bedding, and undertaking light cleaning. You can then spend as much time as you wish hanging out with the cats.

This is a really rewarding time to give back to your local community, and save the lives of cats who would otherwise have been put to sleep.

Interested? Please go to the Helping Paws Volunteers Facebook page and send a message.

These cats are also looking for loving homes so please consider a furry "hot water bottle" as we head into winter...



**WE NEED VOLUNTEERS NOW!**

# Good Keen Blokes/Blokeses

*Or People You May Or May Not Meet Down The Pub...*

Entering into the pub of a night there is a general hubbub of conversation. However, there is one habitue who seems to offer little in the way of conversation. Words like "monosyllabic" and "doesn't say much" are often used in an attempt to describe him.

I have to admit it was like asking questions of a clam, prising information out slowly and little by little. (Luckily, he doesn't do email so as long as he doesn't read this, I am safe)!

Despite this reticence many people do seem to know of his particular set of skills. Fitter/welder fabricator, Wayne Pascoe started his apprenticeship at 16 as a pipe fitter and welder, working mainly with high pressure pipes. Later, he completed an adult apprenticeship as a fitter/fabricator



completing more machine time, giving him the ability to turn pins and bushes for construction equipment. However, he finds his interest or specialisation remains with heavy machinery, transport trailers, tipping trailers and tipping bodies of trucks. If you can call this work beautiful, then having seen several examples of these trailers, then I think one would! Over the years he has lived on a range of ex-commercial fishing boats refurbishing them as he goes. He lived on such a one in Picton for a year, refurbishing the 2006, 65 ft steel ex-fishing boat for a customer. Wayne found Picton an odd place, going from an approximate pop of 1,200 in winter to nearly 12,000 in summer. The people consequently seemed a little clannish and not particularly welcoming to semi-permanents. In fact, in his plain-speaking way he felt that they were akin

to the Westie's of Auckland! Falcons and Valiants abounding. 2006 saw him living on another ex-fishing boat in Panmure Bridge Marina, then Whangarei Town Basin and Bridge Marina in Tauranga. Of all these

Wayne preferred Whangarei as having the most amenities and a friendly multi-national community. Although, having no car parking made it difficult at times.

Wayne has lived on his 2 1/2 acres just out of Paparoa for the last three years, settling right on our first lockdown having relocated all the way from Ruakaka. Here he has spent many hours working on another ex-commercial fishing boat, refurbishing it to meet "pleasure" boat requirements although I wouldn't have thought the work involved that pleasurable. "The Challenge", in every way, was built in 1987 from 32 inch kauri planks, powered by a 250 Ford engine. Recently, Wayne has sold this but continues to work on a replica 32 Ford pick-up. The parts have come from the USA, costing an alarming sum of \$80,000. This project has taken 18 months so far and looks to be another six months off completion. Wayne had to assemble the car first to ensure that all the parts fitted, get it certified then take it apart again, paint it and finally to re-assemble it. He is going to paint it white and call it "Caspar."

As you do.

Clearly highly skilled Wayne's focus remains in doing what he does best (and speaking plainly). Attesting to the quality of his work many of our locals have first commissioned his work and then continued to do so. Not surprising when you see the skill displayed in the finished products.

DC

do you need a **WEBSITE ?**  
**Local, friendly website design & management.**  
 sme-sitedesign.co.nz

Contact Paul for more information:  
 E: paul@sme-sitedesign.co.nz  
 T: 09 431-7063  
 M: 022 625-4156

**Get More Customers  
 Cost Effective Marketing**

**Unichem**  
 Orrs Pharmacy Maungaturoto

For all your health and beauty needs at competitive city prices and with friendly country service

Don't forget - if you are unable to collect your prescriptions from the Pharmacy we can deliver daily to Paparoa, Matakoho and Tinopai confidentiality assured

Enjoy the benefits of shopping locally and save petrol - we are worth the visit!

144 Hurndall Street, Maungaturoto  
 Phone (09) 431 8045  
 Fax (09) 431 8808  
 maungaturoto@orrs.co.nz  
 Open Monday to Friday 9am - 5pm

SHOPPING THAT'S TWICE AS REWARDING.

# Paparoa Store

Proudly Supporting Paparoa

**OPEN 7 DAYS**  
**Monday to Saturday ... 7am-7pm**  
**Sunday ..... 7am-7pm**



We stock a great selection of  
 CONFECTIONERY, ORGANIC, DELI, MEAT,  
 FRUIT, VEGES, FROZEN GOODS, BEER, WINE  
 and a wide range of grocery items at excellent prices

EFTPOS NZ HERALD POST CENTRE

**Phone / Fax 431-7320**  
**Cnr. Franklin Road and State Highway 12**

**To see all our wonderful photos  
 and ads in full colour please  
 click on the link at  
 paparoa.org.nz**

# Billie's Book Corner

Book Reviews By Billie Smith



**RIVERSIDE  
GLASS & GLAZING**

**Kyle**  
021 1376353

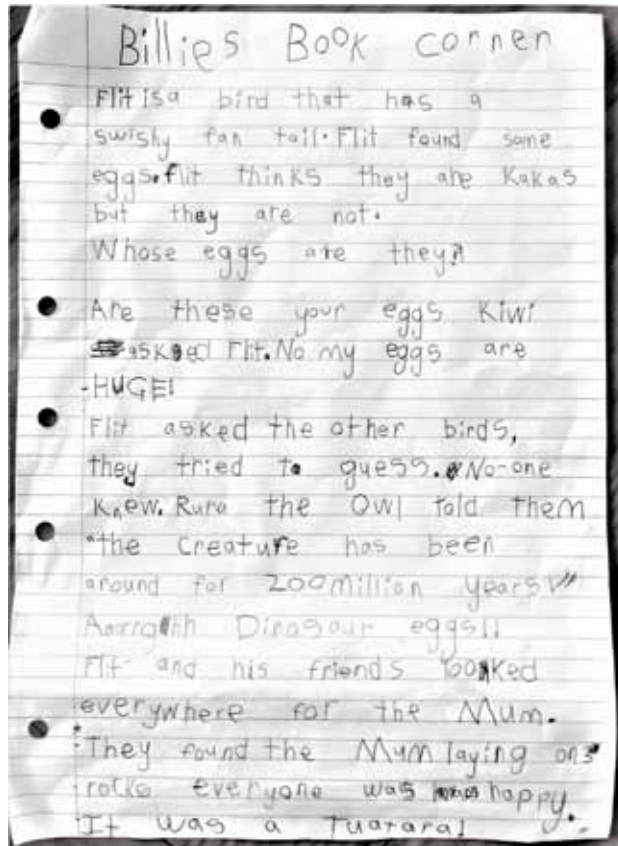
Glass and glazing needs, cat doors to caravan windows. Great rates, mobile effpos.

**ADAM STEVENS**  
BUILDER

Licensed Building Practitioner

For new builds, alterations and roofing

021 741 363 AH 09 431 6245



**gas.**  
Petrol Service Stations

**Paparooa**  
Open 7 days  
Mon-Sun 6am-10pm  
09 431 6302

- Petrol, Diesel & Oil
- Fresha Valley milk 2L \$3.50
- Milk & bread combo \$5.50
- Great variety of snacks
- Pet food - cats/dogs
- Cop-Rice biscuits 20kg
- Great variety of Bait and all fishing requirements
- Top ups & prepay
- Frozen foods
- Firewood
- Hardware
- TRAILER HIRE

**Barista Coffee**

**AA Smartfuel**  
fuel savings that accumulate

AA smart fuel card accepted here  
6 cents off every day

**Manager: Jaspal**  
022 390 5540

## Pets in the Valley



The big news in the vet world is that there are not many vets left! Already many vet clinics are not taking on new clients which can be really difficult for new people moving into an area. But it is a sensible move to try and protect the vets you do have from becoming burnt out. Hopefully animal welfare will not be compromised because of it.

The big message I guess is to be really proactive with preventative health measures as much as possible to keep stock and animals as well as possible thus avoiding urgent care.

With Dargaville Vets closing there is even more pressure on the Kaipara district to provide adequate veterinary services. So plan your animal needs in advance - and don't expect an appointment on the same day you ring or you may be disappointed.

On a happier note I tried something on my bucket list - I had a go at riding side saddle recently. At first it felt like I'd never ridden a horse before but it started to improve. Now I need to have another go as I want to try jumping...



Enjoy our autumn, Janine



## Science Corner

### Nuclear Fission And Fossil Fuels Replaced One Day By Nuclear Fusion?

**What is nuclear fission?** A nuclear reaction in which a larger nucleus is split releasing a great deal of energy. Nuclear fission is used to generate energy within a nuclear power plant. This process creates significant amounts of nuclear waste that can be hazardous to both people and the environment.

**What is nuclear fusion?** A nuclear reaction in which two or more atomic nuclei are combined to form one or more different atomic nuclei and subatomic particles (neutrons or protons) with the release or absorption of energy.

This process takes place in the sun all the time but it's not so easy for humans yet. The pressure required in order to make this reaction occur are not normally possible on earth.

But - a group of nations are collaborating on developing the process of joining two light atoms of hydrogen to produce one atom of heavier helium and using the kinetic energy released to turn a turbine to produce electricity. A fusion reactor has been built but it is not economic at this stage.

Progress is being made using lasers and other techniques and it is expected (hoped?) that by 2033 nuclear fusion will be a viable and cost-effective method of producing clean energy.

Stella



## April Gardening Notes

By now the spent vegetable plants have been removed and its time to think about the important task of preparing the garden beds for planting your winter staples eg various brassicas including, broccoli, cauliflower, cabbage, brussel sprouts and sowing root crops like carrots. A common fault when sowing or planting is poor preparation of the soil. This can be rectified by digging over the soil, adding compost and fertilisers of your choice and leaving for 1-2 weeks. During



this time regular watering will allow the compost mix to break down before you start planting.

Plant seedlings about 30cm apart and at the base of the planting hole add a handful of

potting mix with watergel (previously "gelled up" in water). The leaves will be just above the soil line. To reduce the shock of being transplanted use a watering can of liquid fertiliser diluted in water and soak the plants with this mixture. Put a layer of wet newspaper covered with a light layer of mulch around the vege plants without touching them. The remaining garden, left to rest over winter, can be sown in green crops of mustard and lupins, (I use a mix) to be dug into the soil in early spring.

As a guard against white butterfly caterpillar and snail damage make a frame work with hoops of No 8 wire and cover with fine netting. If you are planning to grow from seeds allow an extra 3-4 weeks before planting out. A punnet of gourmet lettuce together with parsley and chives can be planted in pots with the above potting mix, then placed on the terrace to ensure a continuous supply to pick as and when required.

To store pumpkins over winter put them on a layer of chicken wire off the ground in a cool, dry, airy place with the stalk down.

Its not too late to plant spring flowering bulbs. Remove spent summer annuals and plant your favourite flowers such as primulas, namesias, calendula, pansies, polyanthus, and snapdragons.



Prepare the ground as with the vegetable garden to give a splash of colour over winter/early spring.

JR

# NORTH SPARK

HEAT PUMPS  
SERVICING  
ELECTRICAL

022 021 7139  
northsparknz@gmail.com

## Need a Shed?



- Timber and steel buildings any size
- We do plans and engineers designs for council
- Farm sheds
- Commercial buildings
- Feed pad shelters
- Goat/Chicken sheds
- Horse stables
- Lifestyle sheds
- Excavation, driveways and concrete floors

Your local builder: Andre Nicolai 021 202 9854

I suppose we should be grateful that the bottles are neatly stacked in boxes and not strewn about the place broken...

Honestly - is it too much to ask that you don't drop your household recycling and rubbish in public places.



## OUT & ABOUT AROUND TOWN

**Paparooa's Farmers' market** happens every Saturday morning, 9am- 12 at the Village Green. Fresh fruit & veges, sweet treats, plants, olive oil, fish, preserves, live music and so much more. A great place to catch up with friends or make new ones.

**Flax Weaving At Shop & Brew** on Sundays. Bring some flax and learn under Naadi's tuition. Feel free to come in and try it out.

**Classic Cars & Coffee** There was a massive turnout on Sunday 27th March for the first of what may well become a regular event. Classic and performance cars filled the carpark and street and the beautiful ladies in Zest were pumping out the coffee and food. Watch for a story with photos next month and for future events.

**A Big Thank You To Kaipara Council** for getting the footpath from Cliffs Bridge to the Hall cleared of overhanging vegetation. It only took since November for the service request to be actioned. But this was following years of

neglect and considerable danger to pedestrians.

This is probably the most dangerous stretch of footpath in Paparooa being in a 70k area (which few motorists observe), a blind curve and a narrow path opposite the Hotel.

What's left now is a collection of noxious weeds - gorse, blackberry, elaeagnus, privet and pampas. Who is going to clear that?

*Condolences  
to the family of  
Graham Healey who  
passed away recently.*

## Books @ Ruawai

5 Freyberg Rd, Ruawai

**Selling secondhand books & music**

Loads of good reads  
Lots of children's books  
Fill a bag of books for \$5



Open: Monday, Wednesday, Friday 9:30-2:30pm  
Saturday and Easter Monday 10am-1pm  
Easter Closed Friday and Sunday

Ph 09 439 2044

027 200 5653 or 022 073 9752



4 HOOK RD  
PAPAROOA  
NORTHLAND  
PHONE  
022 317 1507  
027 418 0676

## PAPAROOA COMMUNITY CHURCH

CONNECTING WITH GOD, CREATING COMMUNITY,  
COMMUNICATING THE GOSPEL

*Church Services at 10.30am and 7pm each Sunday*



Everyone Welcome

## June Weber

16 June 1930 - 15 March 2022

*The Kauri Museum lost one of its most passionate and generous supporters in March with the death of volunteer and Co-Patron of the Friends Committee, June Weber.*

*Almost from the inception of the Museum, June and her husband Edsel were part of a dedicated group of locals who gave countless hours welcoming visitors and serving in the shop. June also made equally countless brooches from kauri cones for sale in the shop. Kauri planks and Edsel's competition axe were also gifted and are displayed in the Museum.*

*An early member of the Friends committee, she held most executive positions including co leading the catering when functions involving the Museum were frequent and often large. Skilled in all domestic arts, June in latter years joined a select band of volunteers helping with the conservation and displays of Kauri Museum textiles.*

*"Best practice" underscored everything June did for the Museum; those who worked alongside her are also beneficiaries of her outstanding volunteer legacy.*



## Paparooa Lions Walkway

Starting in the next week or two, contractors will begin work for Kauri Dieback mitigation and protection of the archaeology of the pa site.



During the several weeks that this work is going to take, sections of the walkway will be closed.

Naturally health and safety of all concerned is paramount. We will attempt to keep walkers informed of progress via the Proudly Paparooa Facebook page.

Jim Rowlands

*(Artist unknown, published in Frenchman Julien Crozet's 1783 book Voyage à la mer du sud.)*

**WHAT'S ON - APRIL 2022**

**The Kauri Museum** open 7 days, 9am-5pm  
**PPI Wastewater Workshop** - April 9, 1pm, at Paparoa Sports Pavillion - see p2&3  
**Paparoa Fun Run & Walk** - April 9, 2.30pm, at Paparoa Sports Pavillion - see p1

**REGULAR EVENTS, MEETINGS AND ORGANISATIONS**

**Anglican Church St Marks** 1st, 2nd & 4th Sundays 10am, Hook Road, Paparoa  
**Ararua Church** 10.30am every Sunday. All welcome Ph 431 6622  
**Art Studio, Ruawai** Wed 10-12noon ph Frances 439 2554  
**Badminton** Thursdays 7pm Paparoa Hall \$2 students, \$3 adults, Pete 021 056 7163  
**Exercise to Music** Tue 10.30am Paparoa Hall \$5 Ph Rose 431 7418  
**Farmers' Market** Every Saturday 9-Noon, Village Green, Graham 027 475 4490  
**Grey Power** Last Wed in month, 1pm, Anglican Church Hall, Maungaturoto  
**Grow Paparoa** Thur/Fri/Sun 10am to 2pm at the Community Gardens  
**Holy Trinity Anglican Church**, Maungaturoto, 1st & 3rd Sundays, 10am;  
 2nd & 4th Sundays, 4pm. All welcome  
**Kaipara Marching Team** Weds 4-5.30pm, M'gto, Ph Rose Plunkett 431 7418  
**Line Dancing** Thurs 10am-noon Paparoa Hall Ph Rose 431 7418  
**Mainly Music** Wed 9.30am Paparoa Comm Church, Lynaire Porteous 431 7520  
**Matakohe Garden Circle** 1st Weds each month, 1pm, J Mackinnon 431 6689.  
**Maungaturoto Opportunity Shop** Open Mon 10-1pm Wed 10-3pm Fri 10-3pm  
**Maungaturoto and Districts Rotary Club** Maungaturoto Centennial Hall,  
 Tuesday evenings 6pm, Ph Stella 021 149 0877  
**OTamatea Quilters** 1st and 3rd Mon month 10am, Paparoa Hall 09 439 2262  
**Outdoor Bowls** Maungaturoto Green Ph Tony 431 6026 or Brian 431 6884  
**Pahi Hall** available for hire Ph Tina 0210335128  
**Paparoa Community Church** Sundays 10.30am & 7pm, 4 Hook Road, Paparoa  
 Ph 022 317 1507 or 0274 180 676  
**Paparoa Garden Circle** 2nd Wed of month. Contact Raylee Over 431 6880  
**Paparoa Hall** Functions venue Ph Robyn 431 7306 or a/h Loraine 431 7290  
**Paparoa Library** Tues & Thurs 11am - 4pm, Saturday 10am - 1pm  
 Manager Jas Futter 022 678 1474. Returns Box at Skeltons  
**Paparoa Lions** Dinner Meetings 3rd Mon in month 6.30pm, Sports Pavilion  
**Paparoa Playcentre** Tuesday and Thursday 10am-1pm Visitors Welcome  
 Ph Kirstin 431 7373 txt 021 525 425 or Jane 431 6148 paparoa@playcentre.org.nz  
**Paparoa Primary School** Term 2 May 3 - July 9, Term 3 July 26 - Oct 1. 4317379  
**Paparoa Toy Library** Wed 10.30-1pm, Paparoa Comm Church, Hilery 431 7330  
**Paparoa Volunteer Rural Fire Force (VRFF)** 1st and 3rd Monday of the month  
 6.30pm Depot Rd ph Ken Ogilvie 021 129 4042  
**Plunket Ready Steady Wriggle** Mon 10am Sports Pav. Tina Ball 021 033 5128  
**Selwyn Centre** Thurs 9.45am for over 65's, St Marks, Hook Rd, Ph Sue 431 6224  
**Sports Pavilion** Functions Venue Bookings ph Jane Bailey 431 6148  
**St Mary's Catholic Church** Maungaturoto 10am Wed, 4pm Sunday  
**Table Tennis** Tues 7.30pm, Sports Pavilion \$2 Pete 431 6822  
**Tennis** Mondays 9.30am, 6pm Tuesdays Ph Sue 431 6224, or Pete 021 056 7163  
**Yoga For Everyone** Monday 6-7pm Maungaturoto Hall, Tuesday and Friday  
 mornings 9.30am Paparoa Sports Pavillion. Ph 027 294 4855

PLEASE UPDATE US WITH YOUR DETAILS: [press@paparoa.org.nz](mailto:press@paparoa.org.nz) 

**Weight Loss Group**

Starbright Wellness runs an 8 week group workshop on weight loss. \$320  
 Vicky Hilton 021 24 84259.

**Storage Available**

In Paparoa: Secure 20 foot Containers - contact Gary Dallas 021 431 712.  
 Paparoa County Depot Trust

**Buy Local**  
**Support Local**  
 Help your community thrive  
 Our local businesses, big and small have done it hard for the last couple of years so please support them where you can.

**LOCAL TIDES for April 2022**

TIDES - CALCULATED for PAHI-WHAKAPIRAU

DATE	LOW	HIGH	DATE	LOW	HIGH
1st	5.50	12.16	17th	17.22	11.22
2nd	6.28	12.52	18th	10.03	12.03
3rd	6.05	12.26	19th	6.22	12.46
4th	6.40	13.03	20th	7.08	13.33
5th	7.14	13.34	21st	7.59	14.26
6th	7.51	14.10	22nd	8.58	15.26
7th	8.32	14.52	23rd	10.05	16.35
8th	9.21	15.43	24th	11.20	17.53
9th	10.24	16.47	25th	12.36	6.31
10th	11.39	18.01	26th	13.43	7.42
11th	12.52	6.51	27th	14.38	8.40
12th	16.53	7.56	28th	15.25	9.27
13th	14.41	8.46	29th	16.07	10.09

**Community Directory**

EMERGENCY: FIRE ■ POLICE ■ AMBULANCE dial 111

**COAST TO COAST HEALTH CARE**

Maungaturoto Medical Centre: 8am-5pm Mon-Fri .... 09 431 8576  
 Paparoa Clinic: Open Tues and Thurs 8am-5pm..... 09 431 7222  
 For urgent after hours medical service (Wellsford)..... 09 423 8086

**DISTRICT NURSE** Dargaville Hospital ..... 09 439 3330  
 Healthline - 24 hour service..... 0800 611 116

**HOSPICE KAIPARA** Dargaville Hospital ..... 09 439 3330

**KAIPARA DISTRICT COUNCIL** Helpline ..... 0800 727 059  
 Mangawhai Office..... 0800 100 388

**KAIPARA PHYSIOTHERAPY** Lyndsay Bargh/Lynne Rhodes...09 4391656

**LINKING HANDS** Health Shuttle Service, Maungaturoto.09 431 8969

**LIONS CLUB PAPAROA** President Jim Rowlands..... 09 431 7290

**MAUNGATUROTO PHARMACY** ..... 09 431 8045

**MAUNGATUROTO REST HOME** ..... 09 431 8696

**OTAMATEA COMMUNITY SERVICES** Community House 09 431 9080

**PAPAROA LIBRARY** Free Membership. Contact .....Jas 022 678 1474  
 Tuesday and Thursday 11am-4pm  
 Saturday 10am - 1pm

**PAPAROA PLAYCENTRE** ..... paparoa@playcentre.org.nz

**PAPAROA PLUNKET** .Plunket Nurse Louise 027 2823987 or 09 438 2508

**PLUNKET** Helpline ..... 0800 933 922

**PAPAROA PRIMARY SCHOOL** ..... .09 431 7379

**PROGRESSIVE PAPAROA INC (PPI)** .....Graham Taylor.... 09 431 7209

**PARENT PORT Inc.** free help for families Linda ..... .09 425 9357

**YOUTH & WHANAU FOCUS** South Kaipara, Rose .....09 431 7418

## Mosaic Workshop

White Rock Gallery organised a weekend Mosaic Workshop in Matakoho recently. Tutor and mosaic artist Pat George welcomed eight local ladies to her studio for a weekend of creating.

They settled down for two days of hard work and creativity. Pat is a wonderful teacher and inspires her students with her knowledge of contemporary mosaic techniques - and she provided all the materials. The participants had a great time and each went home with a completed mosaic piece.

White Rock Gallery were instrumental in organising the weekend and applying for a grant from Kaipara Creative Communities to fully fund the workshop. Thanks go to the Creative Communities for the opportunity.

Susan Taylor



## 5 Questions for Sheri O'Neill

Singer/actor/writer/gardener

**How long have you lived in the area?** Forty years last September.

**What brought you here?** I was driving around Te Tai Tokerau with three kids in a Landrover and caravan looking for cheap land. I found it in Tinopai and proceeded to build an offgrid family home - which I still live in.

**What do you do here?** Battle kikuyu in my garden and orchard and talk to the birds.

**What do you like about the area?** Everything!

**What things would you like to see happen here?** Nothing- it's pretty good the way it is!



## EV Road Trip Passing Through

On Easter Monday a group of electric vehicle owners will be heading off on a 5 day tour of Northland. First stop is the Kauri Museum in Matakoho for lunch and a museum visit.

Local EV owners are welcome to join them for lunch at 1pm, or just to say hi.

If you are just interested in seeing a variety of EVs, including Tesla and the very new Hyundai Ioniq 5 (winner of multiple "Car of the Year" awards around the world), then you can pop in from 1.30-2.30pm to have any questions you may have answered. You never know, you might even be able to sweet talk an owner into taking you for a ride!



first national REAL ESTATE | Roper & Jones



What is your Property Worth?  
Ask us now for a  
"FREE NO OBLIGATION APPRAISAL"

COVERING THE KAIPARA

ON **truders property** **re** realstate.co.nz  
(T's & C's Apply)

RACHAEL 021 943 900	RHODA 0274 800 691	KARYN 027 779 9019	CRAIG 021 461 666	SALES		GARY 021 902 087	SHEILA 027 498 5651	JILL 021 505 712	SHAR 022 046 4790	SALES MANAGER	
								CHRISTINE 027 488 1863		SALES & PM	
								ADRIANNE		PROPERTY MANAGERS	
								ROCHELLE		MARNI	

110 Victoria Street  
143 Hundall Street

roperandjones.co.nz

09 439 7295  
09 431 1016

Licensed under  
REAA 2008